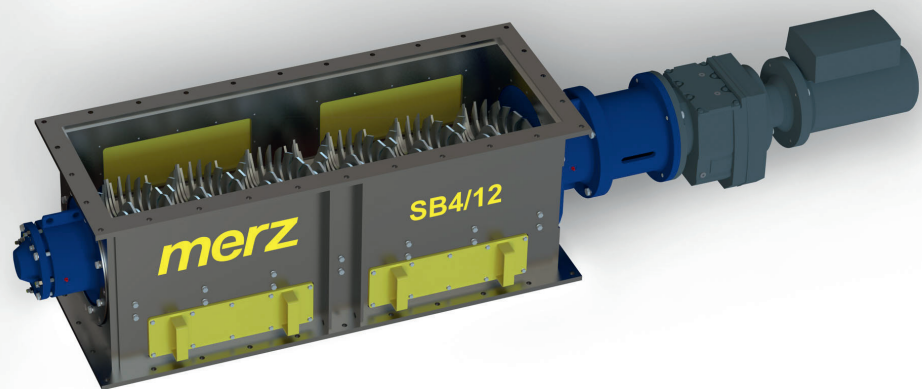


Crushing



LUMP CRUSHER SB

- For crushing lower-strength materials
- Throughput up to 100 t/h*
- Feed grain size up to 350 mm*
- Final grain size from 8 mm*
- Rotor diameter from 350 to 650 mm
- Feed width from 450 to 750 mm
- Feed length from 450 to 2000 mm
- Power input from 2 to 11 kW

Standard scope of delivery

- Sturdy welding construction made from normal steel S235JR
- Rotor profile and grating adapted to material
- Rotor material C45, hardened to HRC 56 - 58
- Material inlet and outlet adapted to upstream and downstream process
- Wiring up to terminal block on machine
- Dust output minimised using seal and suction
- Motor 400 V, 50 Hz, 3p, IP55, suitable for frequency inverter operation
- Motor speed monitoring, sensors without evaluation

Options

- Material feeds available as e.g. vibration chutes or bunkers
- Material outlet via screeners, vibration chutes
- Rotor material in line with your requirements
- Special lining, wear resistant or stainless steel
- Crushing cycle with return feed
- Motors in special voltages
- Protective gas flooding
- Automated bearing lubrication
- Wiring up to customer's control cabinet or complete controls
- Explosion-proof model (mechanical and electric)

Lump crusher	Feed grain size*	Throughput capacity*	Roller diameter	Feed width	Feed length	Power input	Length	Width	Height	Weight
Type	[mm]	[t/h]	[mm]	[mm]	[mm]	[kW]	[mm]	[mm]	[mm]	[t]
SB 3/	≤ 200	≤ 25	350	450	450 - 800	2 - 6	750 - 1050	450	450	0.5 - 1.5
SB 4/	≤ 200	≤ 30	400	550	550 - 1200	2 - 11	750 - 1600	550	550	0.6 - 1.6
SB 5/	≤ 250	≤ 50	500	650	650 - 1400	2 - 11	750 - 1800	650	650	0.8 - 1.8
SB 6/	≤ 350	≤ 100	650	750	750 - 2000	3 - 11	1050 - 2550	750	750	1.0 - 2.5

*Values subject to material, rotor diameter, shafts, feed spectrum, etc.

Please contact us to arrange a test for your material in our technology centre.